

MODELS  
33  
&  
55

# Instructions for Using the **ENSIGN MIDGET CAMERA**

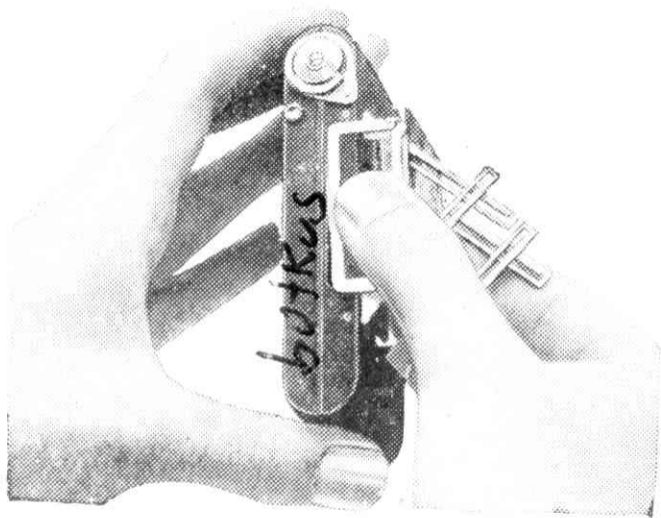
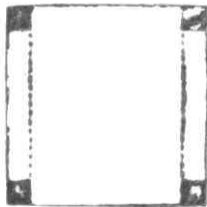
**Model 33 with All-Distance Lens.**

**„ 55 „ Ensar F/6.3 Anastigmat.**

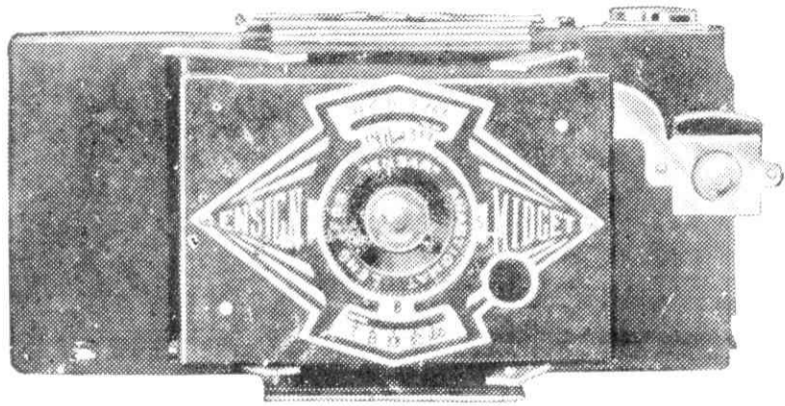
**The compactness of the ENSIGN MIDGET is rendered possible by the careful design of its working adjustments, and it is worth while for the user to study them in order to obtain the fullest value in results from such a unique camera.**

Hold the camera by the two ends in the thumb and fingers of one hand, grasp the centre portion with the other and pull out. (Fig. 1). The front locks in the ends of the four struts.

The BRILLIANT VIEW FINDER is in position ready for an upright picture; (view between the corners thus)—



*Fig. 1.*

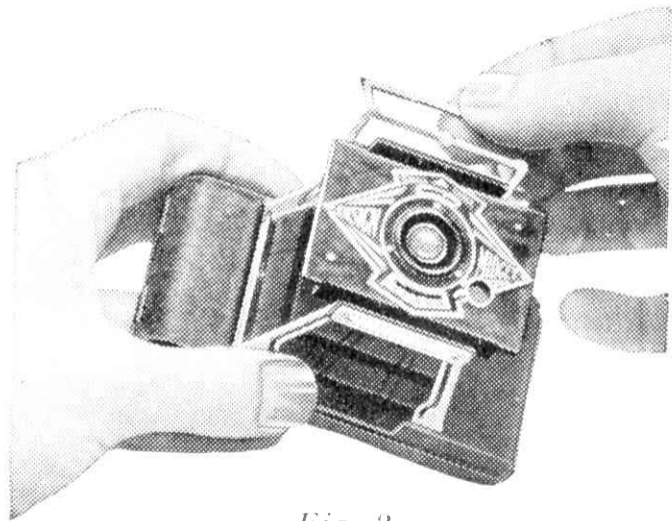


*Fig. 2.*

If a horizontal picture is required it can be swung out on its bracket (Fig. 2) and the view will then be between the corners thus:



The DIRECT-VISION VIEW FINDER is a frame folded down on to the lens front, and a back sight on the camera back. Lift up the top half of the folded frame and continue to lift until the second section rises (Fig. 3) and both click into the upright position. Swing up the back-sight against its stop.



*Fig. 3.*



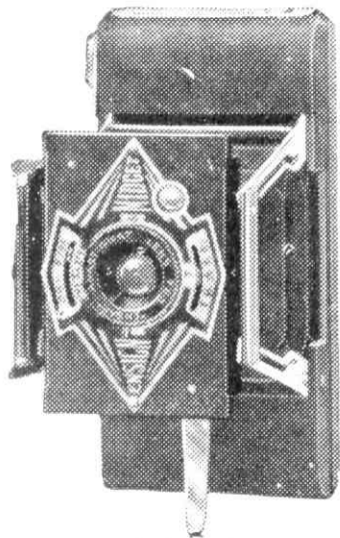
*Fig. 4.*

Viewing the subject through the back-sight (Fig. 4) gives an eye level perspective, and the amount included in the front frame will be taken on the film. The No. 1 CAMERA is furnished with an Optical System of novel construction (Patent No. 271186). The two stops are marked "**small**" for use with brilliant light or sunshine, and "**large**" for use when conditions are dull or cloudy.

The Camera produces sharp pictures at all distances from 5 feet to Infinity without any adjustment of the lens position. The No. 2 CAMERA is fitted with the "Ensar" Anastigmat Lens F/6.3, and stops for Iris diaphragm values of F/8, F/11, F/16 and F/22 are provided. This model is furnished with a focussing adjustment, the front cell of the lens being turned until the pin projecting from it faces either of the five positions marked in red; Inf., 12, 8, 5 and 3 feet. (Fig. 5).



*Fig. 5.*



*Fig. 6.*

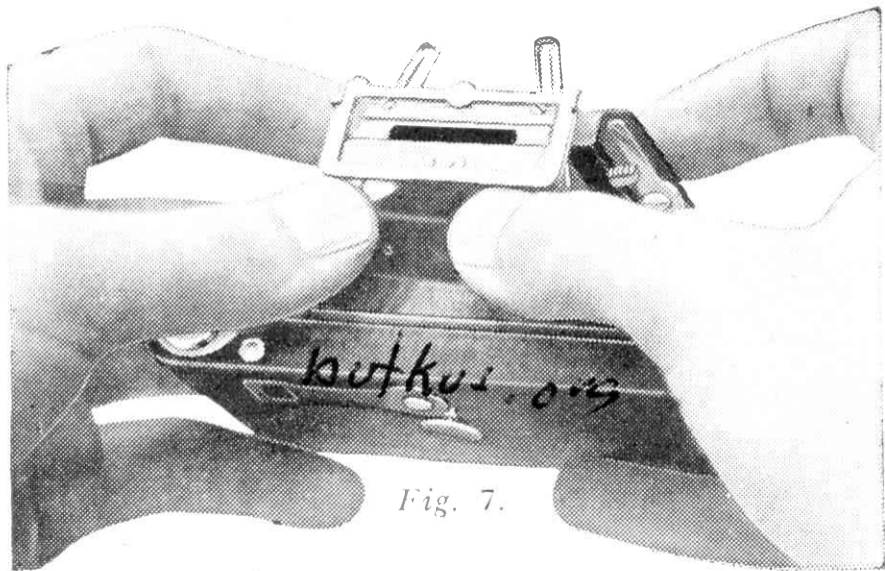
Objects between these distances may be provided for by intermediate positions of the pin, thus half-way between 12 and 8 will be correct for 9 to 10 feet, etc.

Both Cameras have the same shutter with settings for three Instantaneous speeds,  $1/25$ th,  $1/50$ th and  $1/100$ th second (approximately), also Bulb and Time.

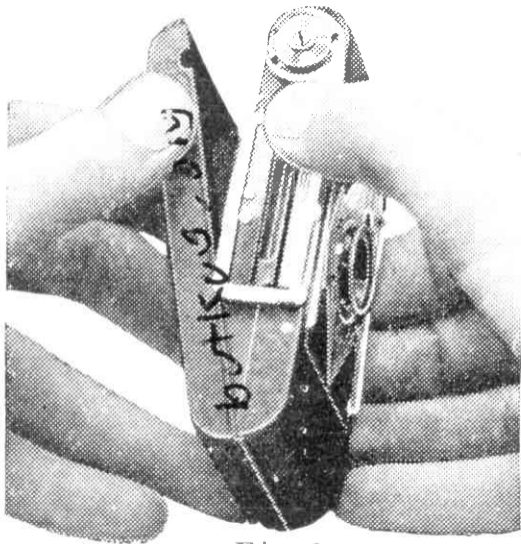
The trigger is just behind the lens front on the right side (opposite the view-finder) where it is well protected from accidental operation. Here is situated also the leg for standing the camera erect when taking an upright picture (Fig. 6). Before closing the Camera the Brilliant View-finder must be returned to its original vertical position.



WHEN CLOSING THE CAMERA care is necessary in order to avoid pressing the bellows folds in; hold the four struts with the thumbs and **second** fingers of each hand, thus leaving the fore-fingers free to press on the front, whilst a slight **outward**



*Fig. 7.*

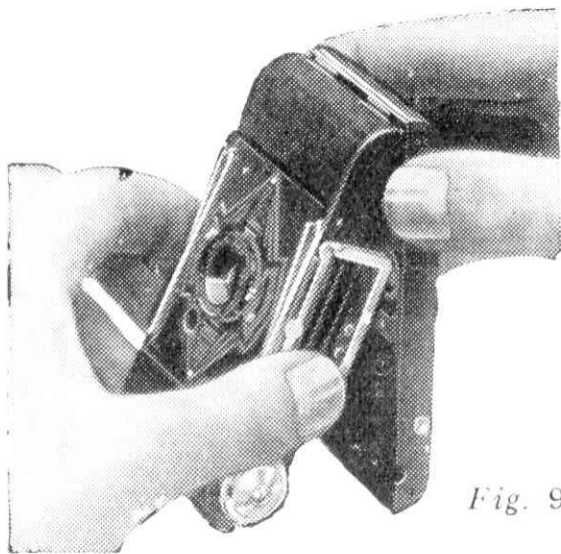


*Fig. 8.*

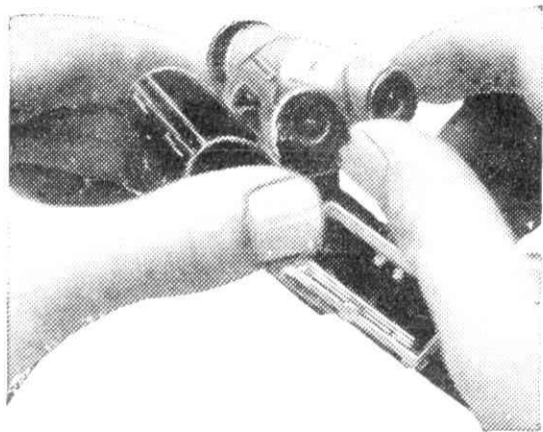
pressure is given to the struts (Fig. 7) until the front is free.

TO OPEN THE BACK, slide the top catch, as indicated by arrow, and lift off back by grasping it just below the winder, where a small stud furnishes a grip. The back unhooks at the lower end (Fig. 8).

WHEN REPLACING THE BACK it is important that the two hook projections on the back fit into two corresponding recesses in the body. It is easier to do this if the camera is held with the bottom end uppermost (Fig. 9). For convenience in loading the films both carriers are made to swing out from the spool chambers, but they are permanently attached and cannot be lost. The upper one must, before attempting to swing out, be freed by withdrawing the winder; the lower one is free to swing.



*Fig. 9.*

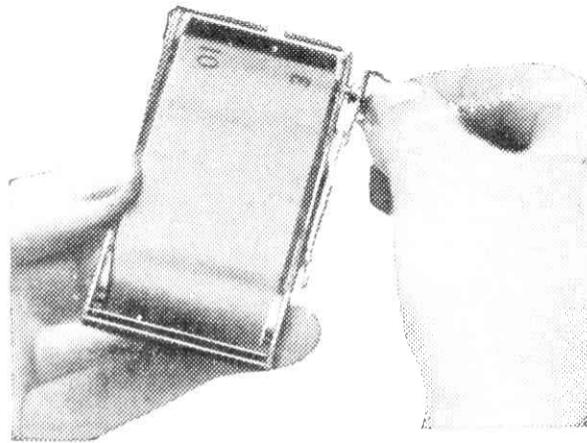


*Fig. 10.*

TO LOAD, swing out lower spool carrier, slide the moving end outwards, and insert new spool (Fig. 10): break the seal, press carrier back into chamber, and lead paper over the rollers to the receiving spool in the top chamber. Give the winder one or two turns to draw paper tight, then replace back.

**Note** Unless the winder is fully engaged (Fig. 11) the back cannot be put on.

Continue winding the film until the figure 1 appears in the red window at the back of the camera. The film is now in position for the first exposure.



*Fig. 11.*

After completing the sixth exposure, wind film completely off, then remove the back and seal film with the " EXPOSED " label **before removing it from the carrier**, otherwise it may slacken and become fogged. Withdraw winder, swing out carrier and remove the spool, transfer empty bobbin from bottom chamber to top (it may be placed in chamber either way round) and the camera is ready for re-loading.

**CAUTION.** Do not wind spool with the Camera closed : there is a risk of scratching the film on the back of the bellows.

**ENSIGN, LIMITED**

**LONDON, W.C.1**